



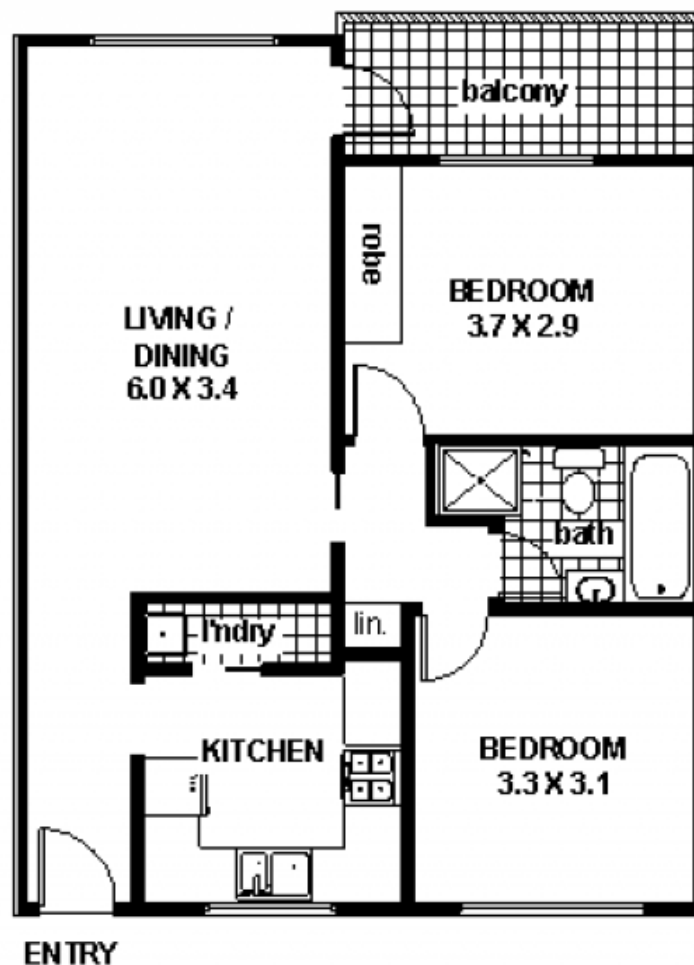
7/424 Mowbray Road LANE COVE NSW

2 1 1

SOLD by LLOYD ALLEN 0407 202 751 R&W Lane Cove
(02) 9410 2277

Type : Apartment
Building Size: 86 sqm
View : <https://www.selectproperty.net.au/827815>
1

7 / 424 MOWBRAY RD. LANE COVE



CARSPACE
(not shown)

FLOOR PLAN
ALL DIMENSIONS AND LAYOUT ARE APPROXIMATE ONLY.
NO GUARANTEE OR LIABILITY WILL BE ACCEPTED FOR
RELIANCE PLACED ON IT.