

76/450 Pacific Highway LANE COVE NSW

 1
  1
  1

Water Views in Lane Cove ?

Yes ! This Pool-Side suite at the whisper quiet rear of the Shore Apartments has the feel of a tropical island paradise. From the front gate you look out over sparkling waters and palm trees.

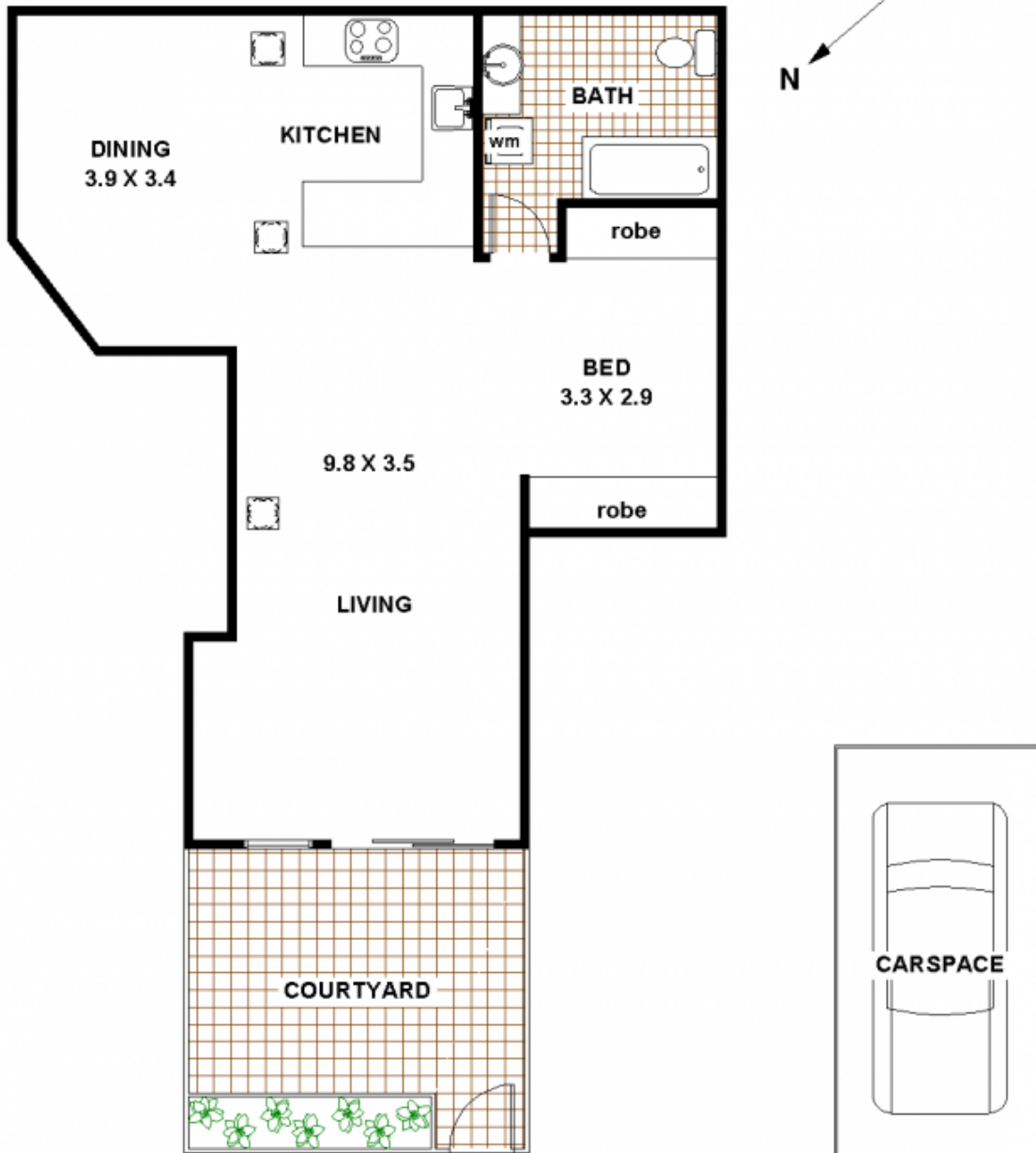
There are 81 squares of internal living space, plus a leafy courtyard and a handy parking space just metres from the front gate. One bedroom with two sets of built-in wardrobes, a bathroom with a bath ! and internal laundry facilities. A living area opening through sliding glass doors to the courtyard and a separate dining room which could double as an extra bedroom. Check the photos for the view from the front gate. Just five steps down to the pool and sauna and spa. Then there is a half sized tennis court and a fully equipped gym to keep you fit.

All of this just minutes from the CBD with bus transport on the doorstep or a healthy ten minute walk to Artarmon

[For full version visit the website](#)

Type : Apartment
Building Size: 81 sqm
View : <https://www.selectproperty.net.au/8278175>

76 / 450 Pacific Hwy. Lane Cove



FLOOR PLAN
ALL DIMENSIONS AND LAYOUT ARE APPROXIMATE ONLY.
NO GUARANTEE OR LIABILITY WILL BE ACCEPTED FOR
RELIANCE PLACED ON IT.