



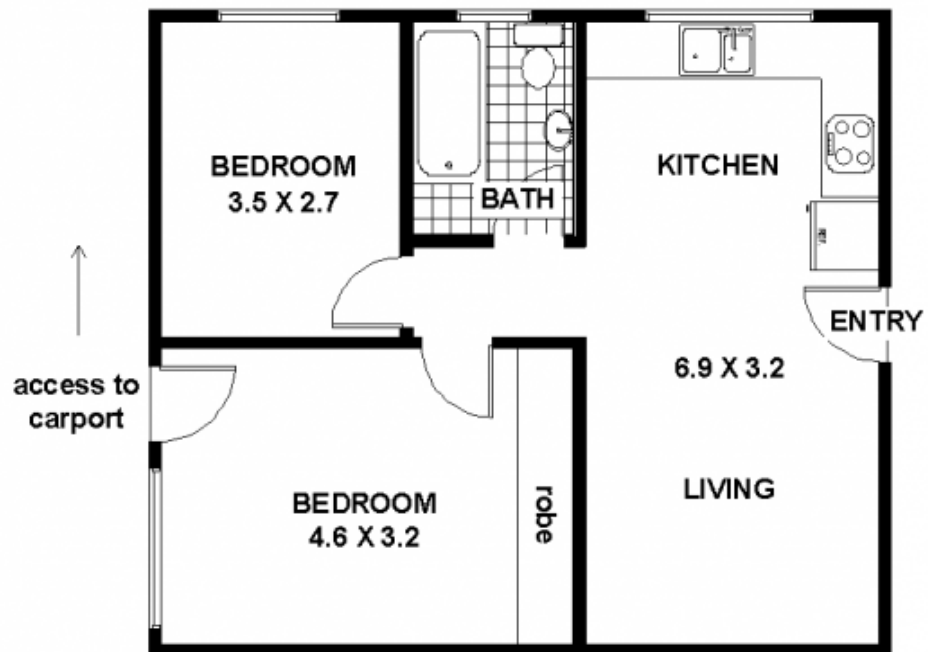
15/4 Murray Street LANE COVE NSW

 2
  1
  1

Elizabeth Garden - Stylish renovated two bedroom apartment - dual street access, two steps from car to apartment

Type : Apartment
Building Size: 68 sqm
View : <https://www.selectproperty.net.au/8278200>

15 / 4 MURRAY ST. LANE COVE



FLOOR PLAN

ALL DIMENSIONS AND LAYOUT ARE APPROXIMATE ONLY.
NO GUARANTEE OR LIABILITY WILL BE ACCEPTED FOR
RELIANCE PLACED ON IT.