

31/386 Mowbray Road LANE COVE NORTH NSW

 2
  1
  2

Great first home, strong investment potential.

Bright and airy, solidly built 2 bed apartment in cream brick 1970s block.

Spacious original kitchen with gas appliances and internal laundry.

North East aspect for winter sun.

Original white tiled bathroom.

Double Lock up Garage

Recently recarpeted and repainted.

Very handy for transport, shops and schools.

Reasonably priced for first home owners.

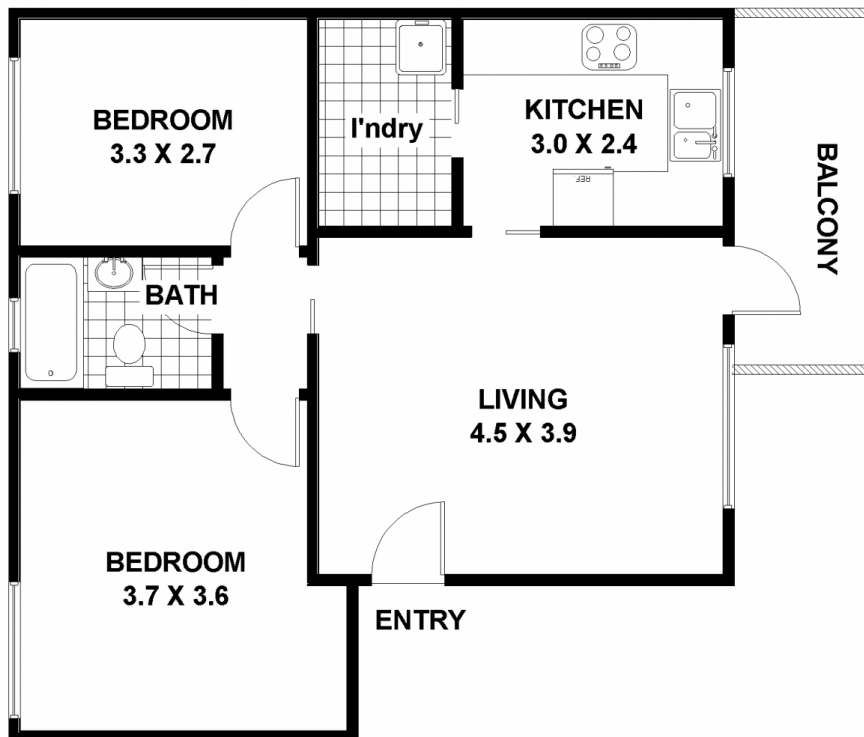
Good strata management team

Investment special with very low maintenance, strata and rates.

Type : Apartment
Building Size: 70 sqm
Land Size : 103 sqm
View : <https://www.selectproperty.net.au/827821>
 2

31 / 386 MOWBRAY RD. LANE COVE

N



DOUBLE LOCKUP GARAGE
(not shown)

FLOOR PLAN

ALL DIMENSIONS AND LAYOUT ARE APPROXIMATE ONLY.
NO GUARANTEE OR LIABILITY WILL BE ACCEPTED FOR
RELIANCE PLACED ON IT.