

Location shot



101 Warrane Road WILLOUGHBY NSW

 3
  1
  3

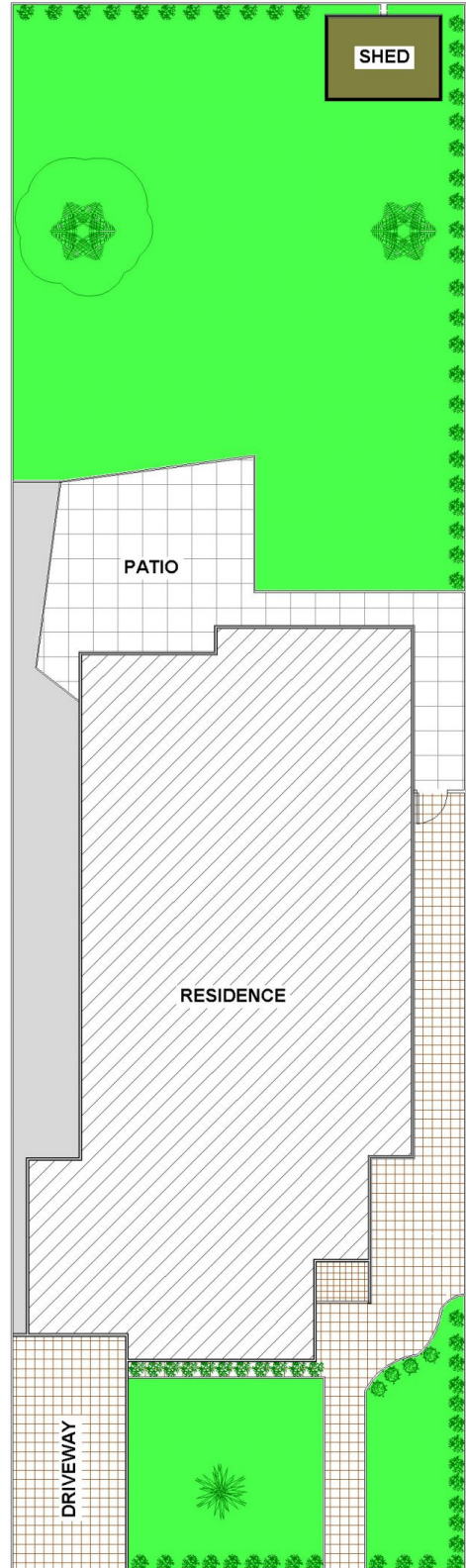
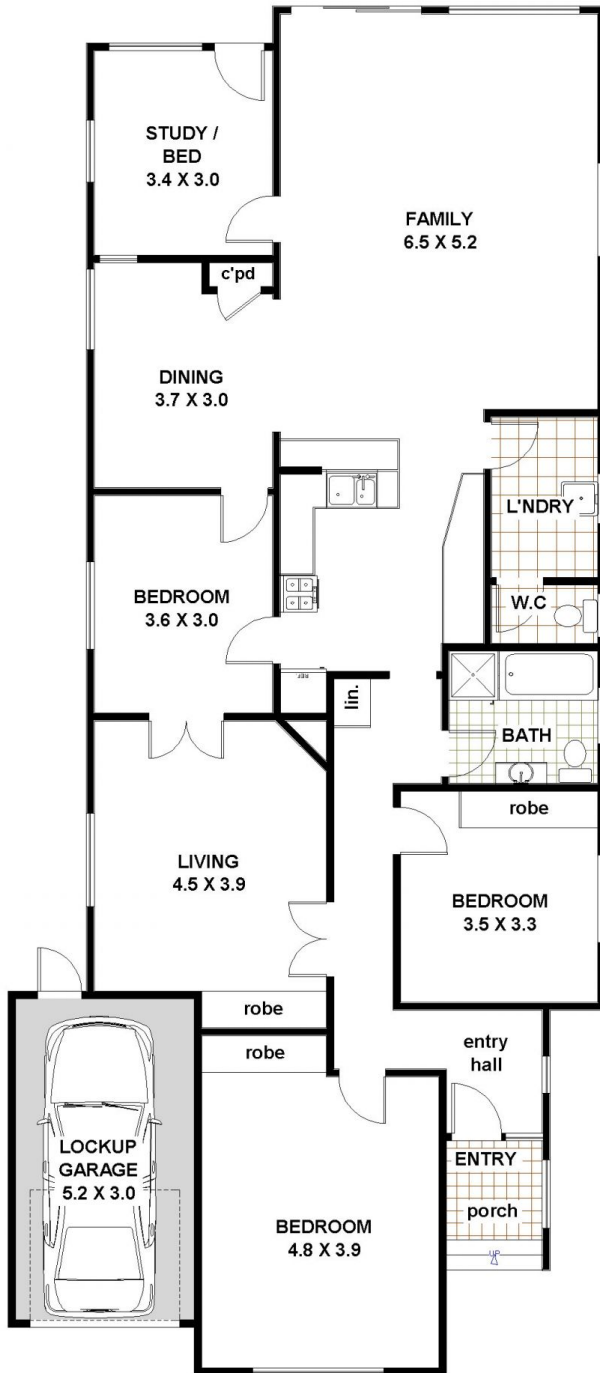
SOLD AT AUCTION

Superbly positioned sundrenched North East facing near level 595 sqm block with a solid full brick home in need of renovating or rebuilding. The 1970's decor throughout is ready for a makeover. Currently leased this will make an ideal investment with a load of potential to capitalise on this prime position. All only minutes walk to Willoughby Park, local shops, schools, cafe's and restaurants, city transport or Chatswood CBD and shopping district.

AUCTION THIS SATURDAY 23rd November @ 10am
Registrations from 9.30am

Type : House
Land Size : 594 sqm
View : <https://www.selectproperty.net.au/8278344>

101 Warrane Road WILLOUGHBY



FLOOR PLAN
ALL DIMENSIONS AND LAYOUT ARE APPROXIMATE ONLY.
NO GUARANTEE OR LIABILITY WILL BE ACCEPTED FOR
RELIANCE PLACED ON IT.