



2/6 Elizabeth Parade LANE COVE NSW

 1
  1
  1

Priced to Sell - Great First Home or Investment Opportunity

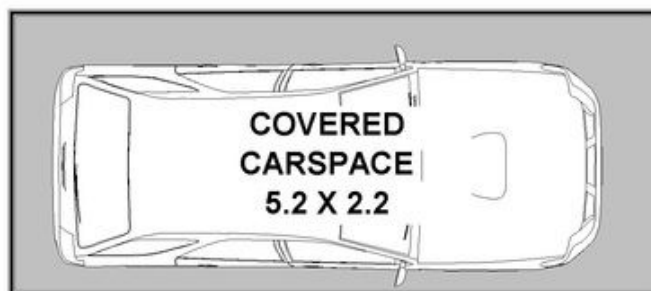
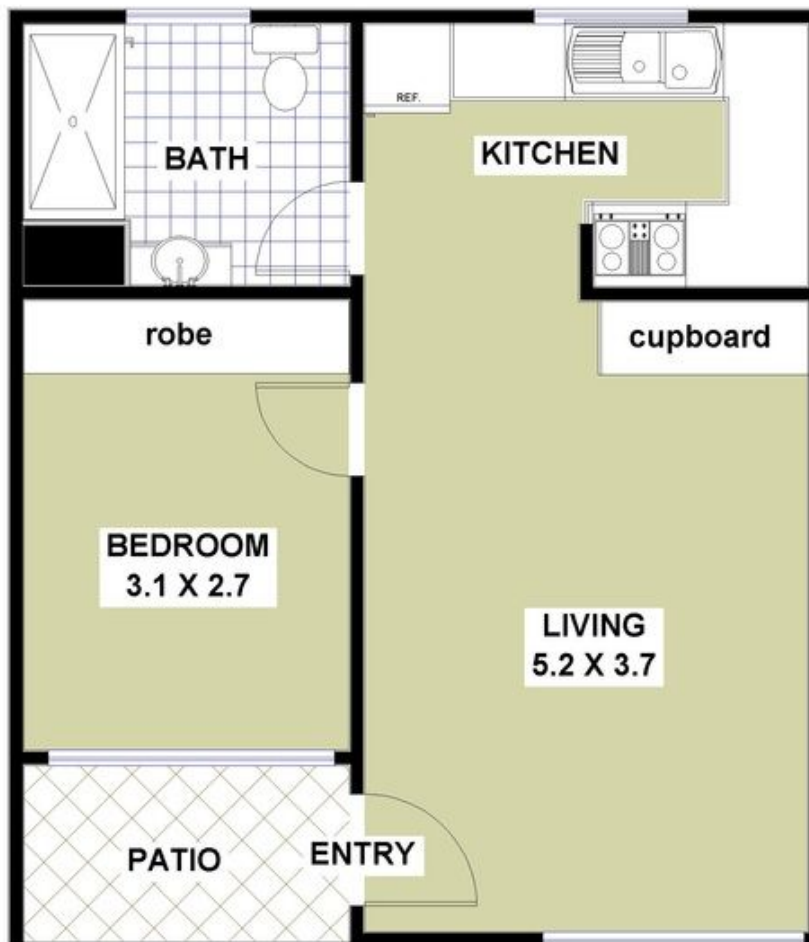
Located in a quiet leafy setting, this easy accessible ground floor apartment has it's own private entrance with undercover parking just metres away.

Features:

- Low rise complex, surrounded by bush land reserves
- Combined living/dining area
- Function separate kitchen
- Bedroom with built-in wardrobe
- Large functional bathroom
- Plantation shutters throughout
- Single undercover parking
- A short stroll to Express city buses

Type : Apartment

View : <https://www.selectproperty.net.au/8278414>



2 / 6 Elizabeth Parade, Lane Cove

All dimensions and layout are approximate only. No guarantee or liability will be accepted for reliance placed on it. The particulars of this brochure are supplied information only & shall not be taken as a representation on the part of the vendor or its agent.