



37/23-27 Romsey Street WAITARA NSW

 4  2  2

Sensationally spacious four bedroom penthouse

Boasting 225 square metres on title, this unique four bedroom penthouse apartment in the sophisticated "Chelsea Park" complex with pool, spa, sauna, gymnasium and BBQ offers resort style living. Just moments to Hornsby CBD, Westfield and with easy access to trains and buses this property offers the ultimate lifestyle.

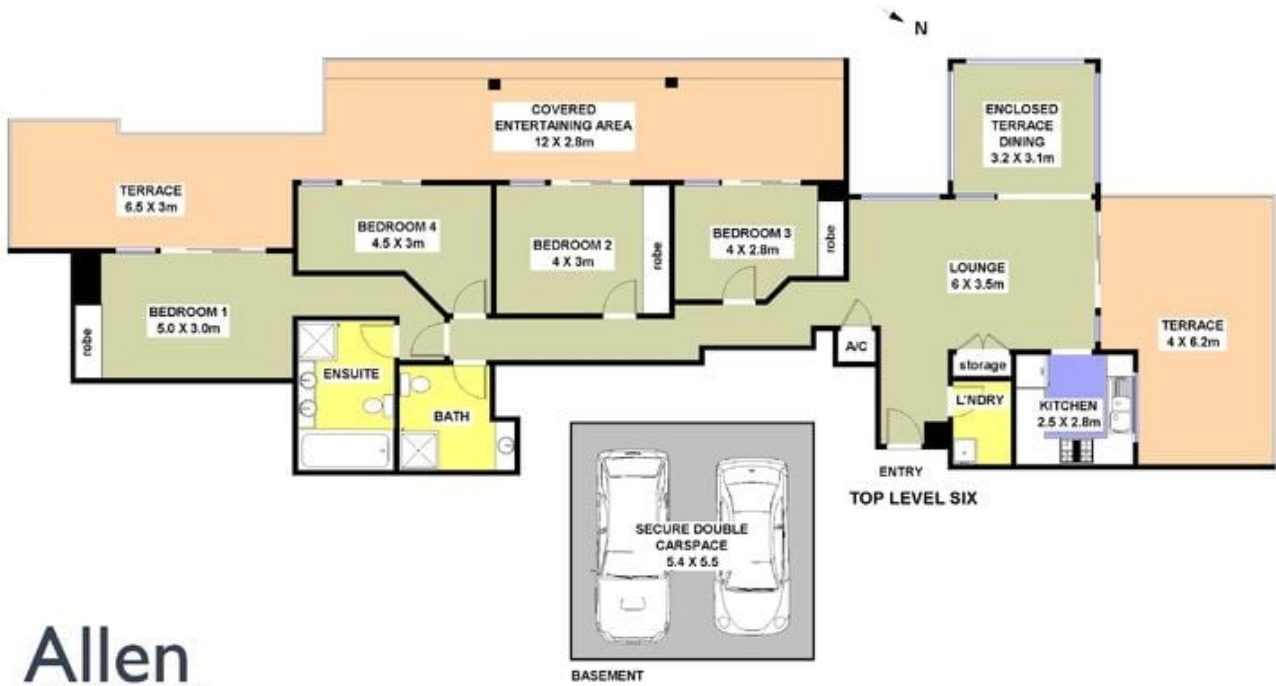
- * Light and spacious with elevated airy views
- * True North aspect
- * Master with en-suite, built-in robe and access to terrace
- * Three additional bedrooms all with direct access to terrace and all with built-ins.
- * Large gas kitchen with stone bench and Smeg appliances
- * Large double terrace and entertaining areas with gas BBQ outlet
- * Separate internal laundry

[For full version visit the website](#)

Type : Apartment

View : <https://www.selectproperty.net.au/8278417>

37 / 23 Romsey Street, Waitara



Allen
estate agents

FLOOR PLAN. All dimensions and layout are approximate only. No guarantee or liability will be accepted for reliance placed on it.